

Food risk assessment capacity building workshop for food safety regulatory Professionals

**Establishment of monitoring and control
programs based on risk as a Foundation for
Robust Food safety system**

26 February - 1 March, 2023

Dr. Karima Zouine, food safety expert –GFoRSS

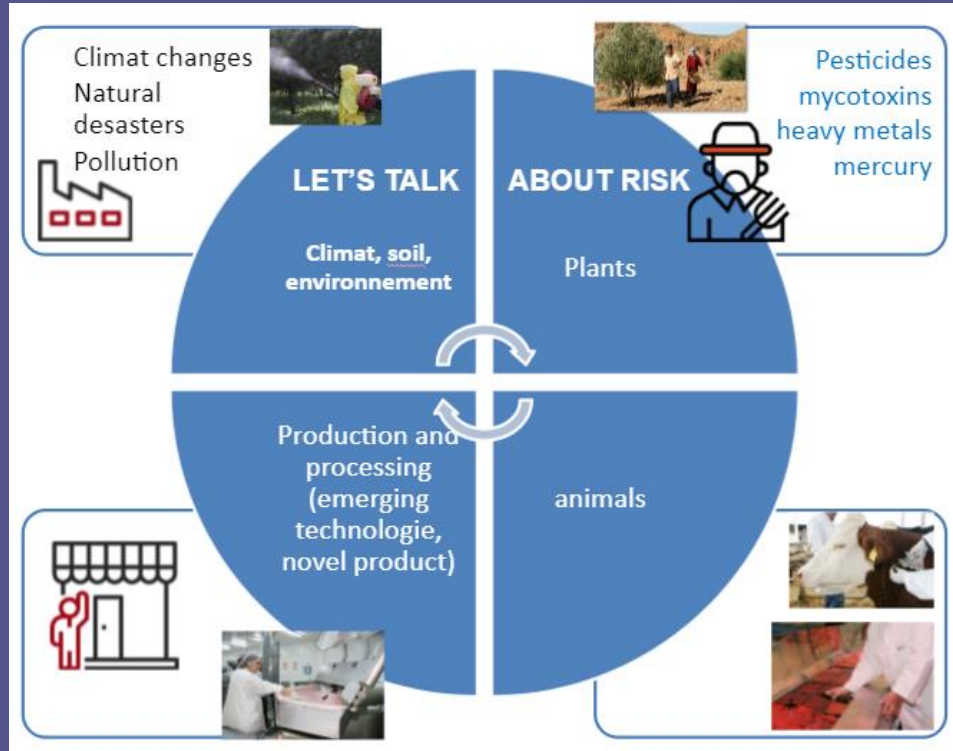


1. Monitoring program
 - Why is it important?
 - Logical steps
 - Application of risk assessment as a basis
2. How it could be applied to improve the regulatory system?
3. Experience



Why is it important to implement monitoring program?

Let's talk about **hazards**/risks



Risk management tool

Official control over the entire food chain (compliance with the regulation).

Calculate the prevalence of hazards

Provide more guarantees for exported products

THE OBJECTIVES



Raise the level of monitoring for early detection.



Anticipate hazards and manage risks effectively in order to improve the level of control and monitoring of food safety.



to allow a fast and anticipatory intervention regarding risks



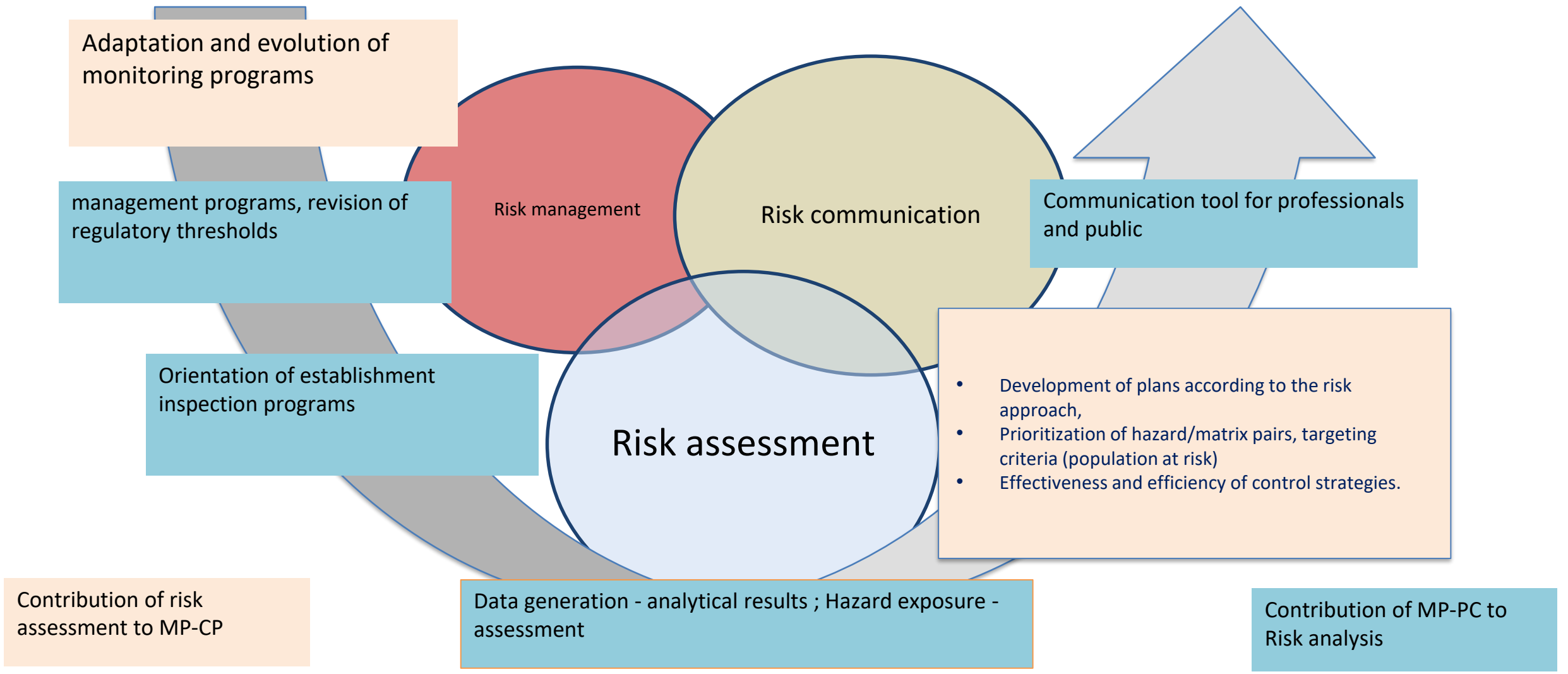
To provide a scientific argument and to guide decision-making in the area of food safety

Different approaches/programs according to the objectives targeted

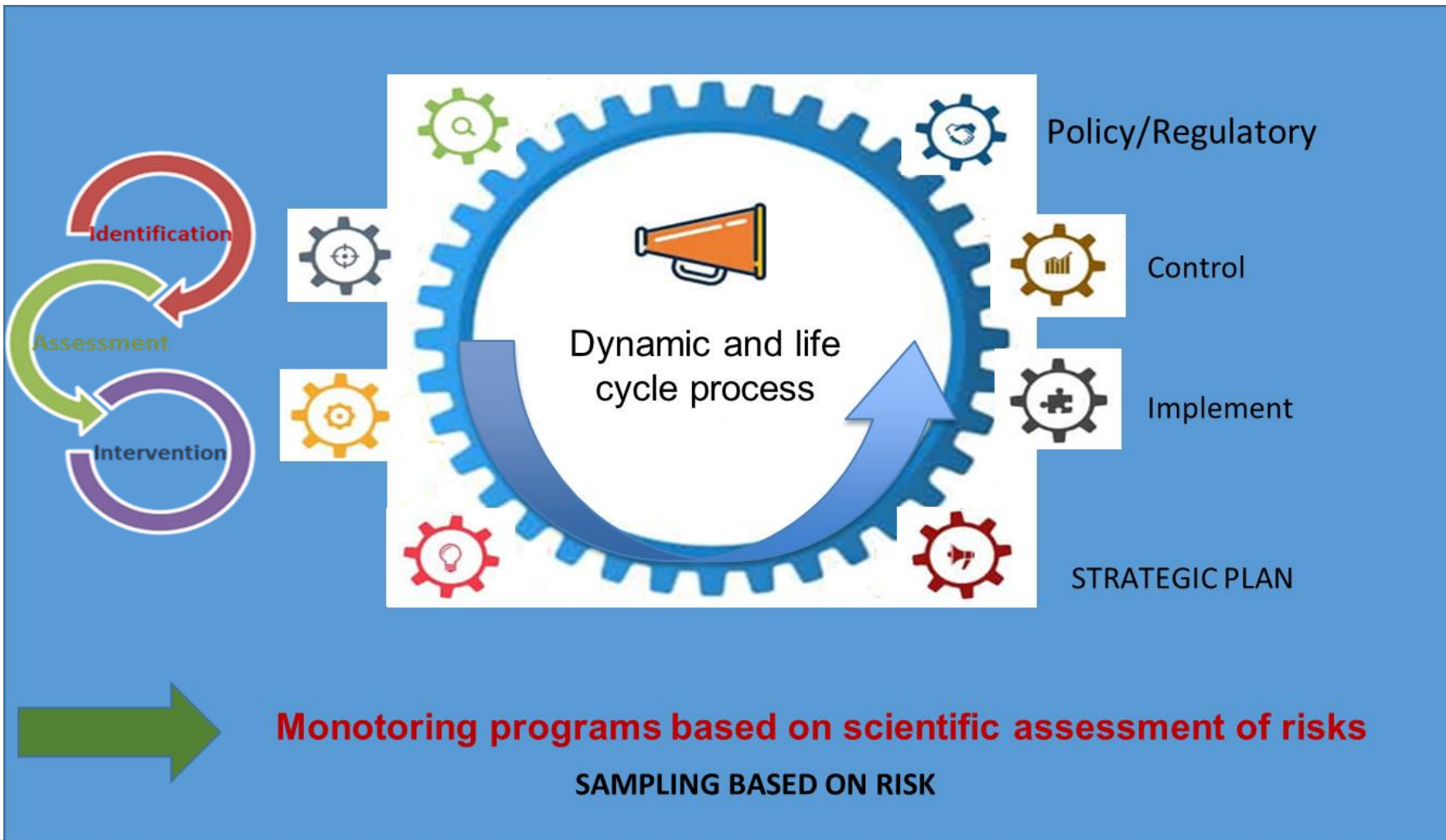
5

	MONITORING	CONTROL
Objective	To assess the overall exposure of the consumer to a particular risks by evaluating the prevalence of the contaminants in products at different stages in the food chain	To control risks by searching for the anomalies, non-conformities and even fraud
Approch	based on random sampling of identified population (product) or sub-population (in space and/or time).	It is normally based on targeted sampling, that are taken on the basis of predetermined targeting criteria
Scope	Identification of management measures	Evaluate the effectiveness of management measures

MP-CP by dynamic Risk Analysis process



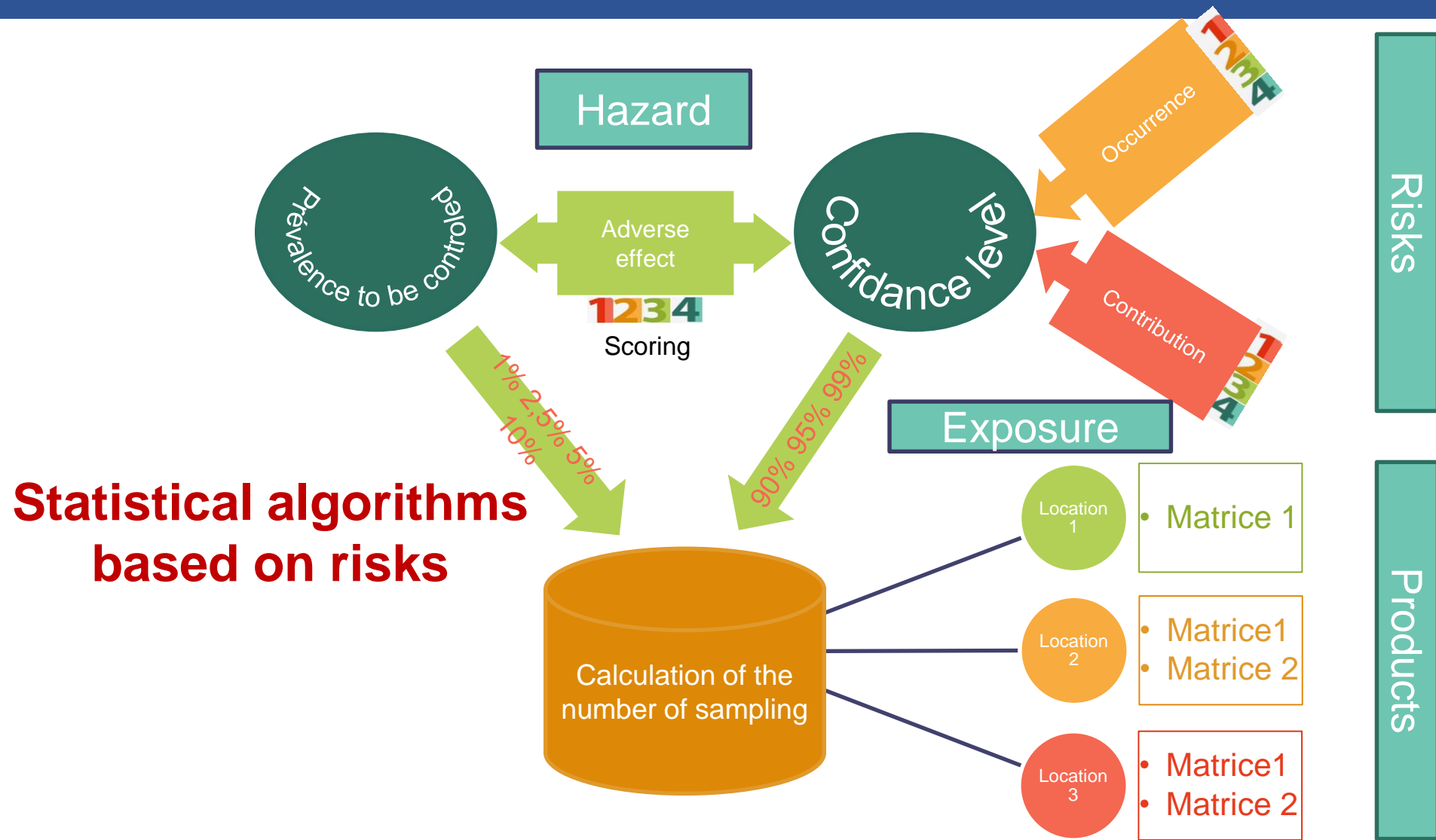
A DYNAMIC AND STRUCTURED APPROACH TO INSURE SAFETY AND ROBUST FOOD SYSTEM



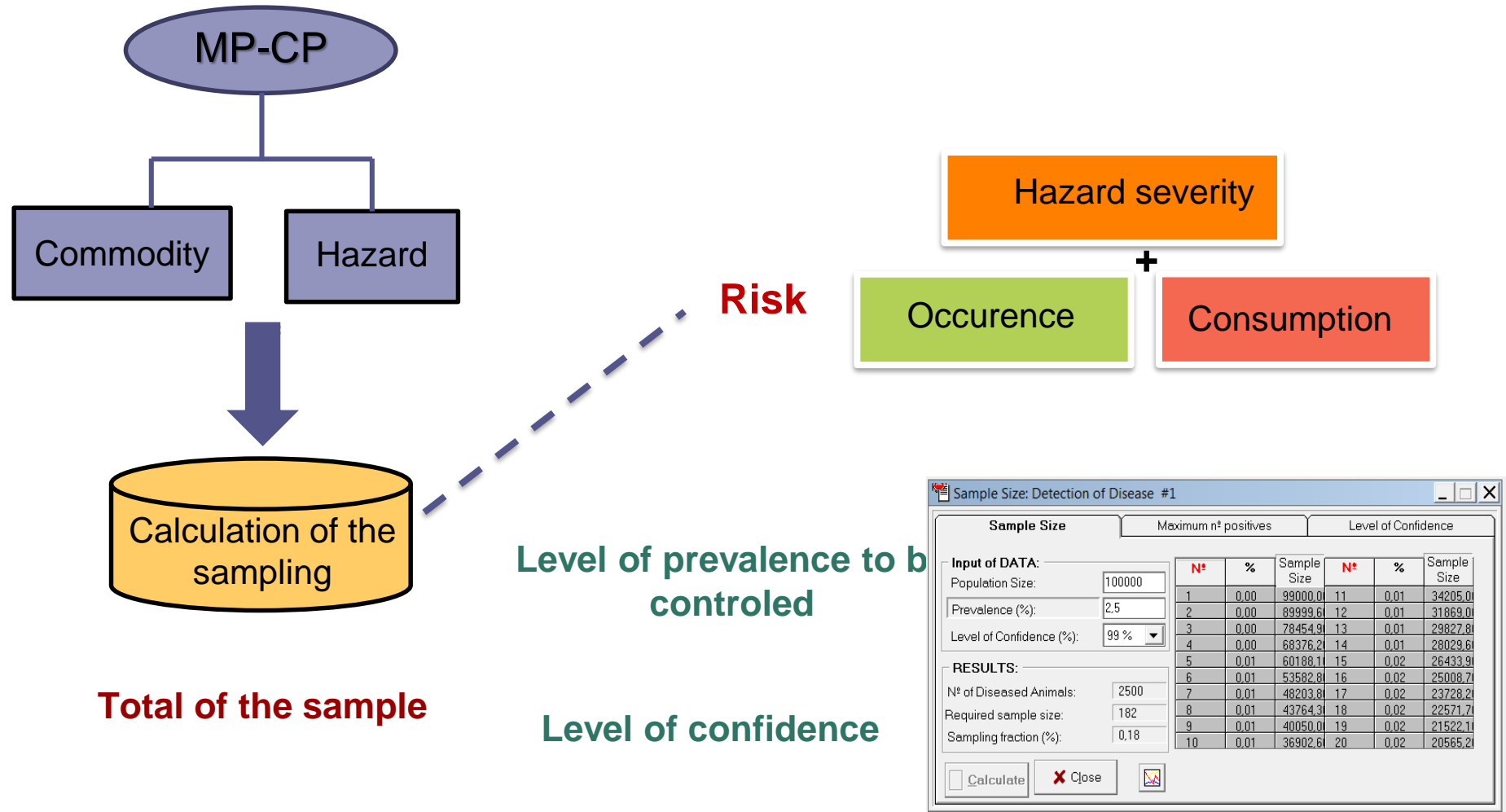
Process based on de 4 steps

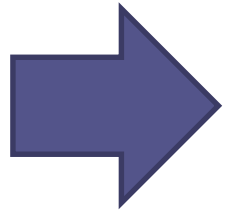


1. Identification of hazards/active substances
2. Description of the population and identification of the matrices to be sampled
3. Determination of the number of sampling by identification of the prevalence to be controlled/expected and confidence level
4. Distribution of analyzes between matrices and sampling locations

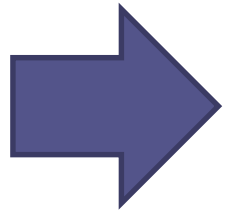


Calculation of the sampling based on risk assessment

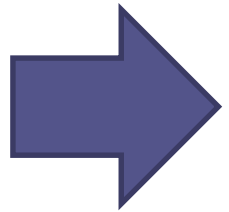




Develop an interactive mechanism with actors and key partners for sharing and transmitting the information needed for timely risk monitoring;



Develop an efficient system that integrates all potential sanitary and phytosanitary risks;



Strengthen the competences in risk assessment and scientific expertise in the field of food safety .



A r a b
C O D E X

